



CU G 2008

HELSINKI • MAY 5–8, 2008

CROSSING THE BOUNDARIES

State of XT Software: The Year in Review

David Wallace
Director, Technical Project Lead
dbw@cray.com

CRAY
THE SUPERCOMPUTER COMPANY

XT Year in Review

- Accomplishments over the last 12 months
- Brief Glimpse of Future

2007 ACCOMPLISHMENTS

UNICOS/lc 1.5 updates

Revision	Release Date
1.5.45	03-MAY-2007
1.5.47	11-MAY-2007
1.5.52	29-JUN-2007
1.5.55	20-JUL-2007
1.5.57	10-AUG-2007
1.5.59a	08-OCT-2007
1.5.60	02-NOV-2007

UNICOS/lc 2.0 Release and Updates

Revision	Release Date
2.0.LA	02-JUL-2007
2.0.14	30-JUL-2007
2.0.17	13-AUG-2007
2.0.20	10-SEP-2007
2.0.GA	10-OCT-2007
2.0.33	06-DEC-2007
2.0.35	20-DEC-2007
2.0.36	08-JAN-2008
2.0.39	24-JAN-2008
2.0.40	01-FEB-2008
2.0.41	21-FEB-2008
2.0.44	10-MAR-2008
2.0.49	18-APR-2008

Accomplishments: Service support

- Completed joint CNL assessment with NERSC
- Helped support the Army HPCRC migration to Compute Node Linux (CNL)
- Engineering and managerial support of CNL bring-up on NERSC and ORNL machines
- Customer STREAMS performance analysis for NERSC
- Spent a significant amount of time on analyzing OS jitter
 - ✦ Wrote analysis paper and implemented improvements.
- Assisted Service organization on most system acceptances
- Committed to working with the Xtreme group

Accomplishments

- In field today or undergoing field trials
 - ✿ Unified Boot
 - ✿ Ldump
 - ✿ Linux Kernel
 - ▶ support for QC, HD
 - ▶ Family 0x10 support
 - ▶ patches
 - ✿ Quad Core
 - ✿ Compute Node Health Daemon (Phase 1)
- In upcoming 2.1 release
 - ✿ SLES10 SP1 on SIO nodes
 - ✿ **Great improvements to XTInstall tool!**
 - ✿ Perfmon 2.3 2.6.5X
 - ✿ Comprehensive System Accounting
 - ✿ Cray Data Virtualization Service
 - ✿ Service node failover and warmboot (Phase 1)
 - ✿ Affinity/pinning with SDB support (segment tables)
 - ✿ Restructuring of the software build/RPMs
 - ✿ Portals performance optimizations on CNL
 - ✿ Kernel Huge page support
 - ✿ Improvements to Out-of-Memory (OOM) killer on the XT Compute Nodes
- Common Kernel Source Repository in place for XT and X2

Accomplishments

- OS support for XT4 Quad Core and XT5
 - ✱ Introduced new kernel (Linux 2.6.16.53)
 - ▶ **Completed qualification on all platforms**
 - Single core
 - Dual core
 - ✱ Quad core (incomplete)
 - ▶ Integrated into 2.0.30 (no regressions!)
 - ✱ Integrated NUMA kernel into 2.1
 - ▶ Completed qualification on all platforms
 - ▶ Extensive performance testing
- Added support for PCI-Express
- Support for SPR 740520

Accomplishments:

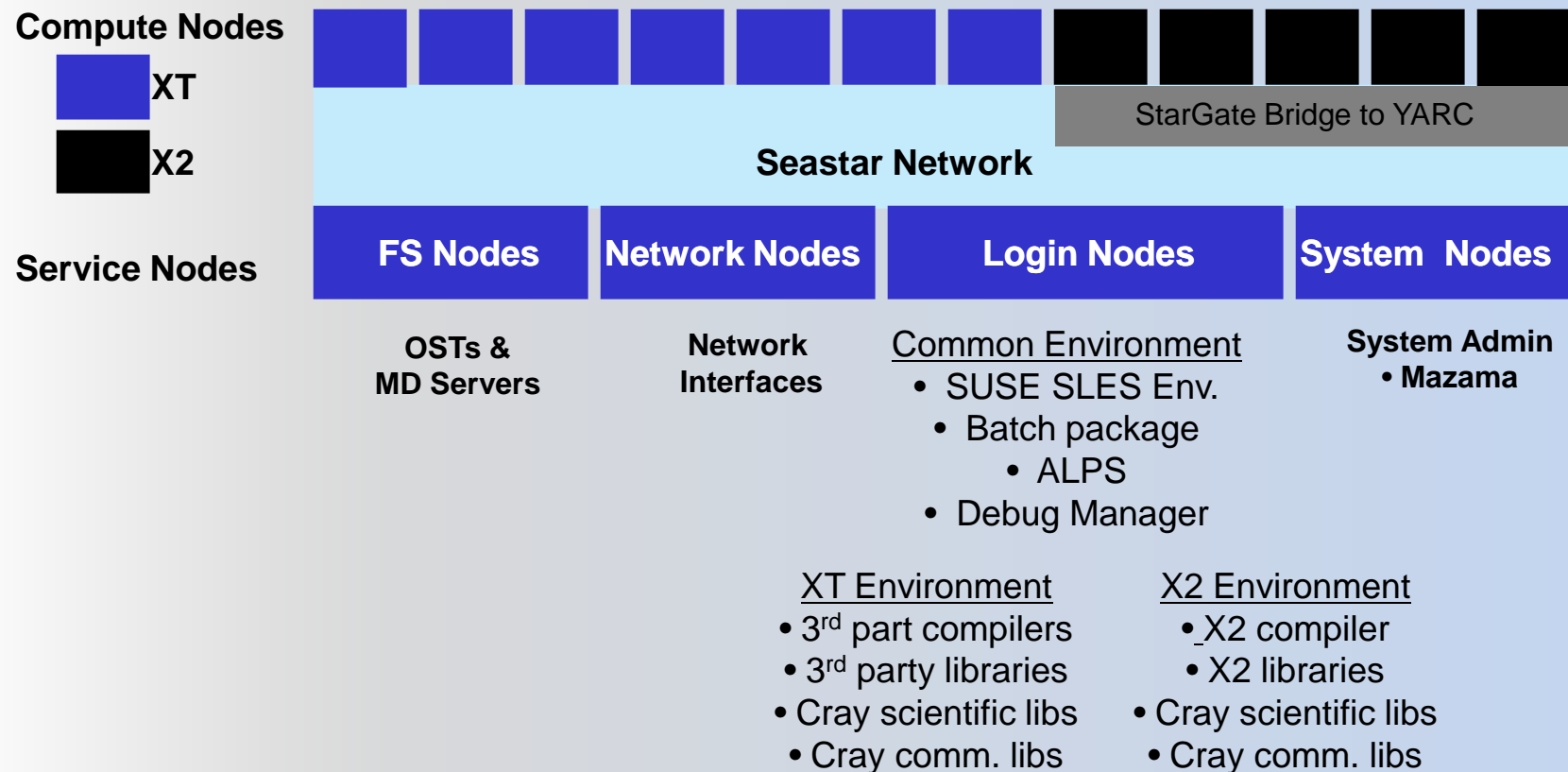
■ Integrated XMT with XT

- Booted 128P Threadstorm 2.0 system in July 2007
- Delivered 4P Threadstorm 2.0 system to PNNL in September 2007
- Switched XMT to use XT 2.0 December 2007
- Booted 64P Threadstorm 3.0 system in January 2008
- Delivered 2 16P Threadstorm 3.0 systems in April 2008

■ Integrated X2 with XT

- Programming Environment 6.0 released in September 07
- UNICOS/lc for Cray X2 released in December 07
 - ▶ Currently running on 744 Cray X2 processors (six cabinets)
 - ▶ Supporting mixed Cray XT and Cray X2 workload

Hybrid User Environment

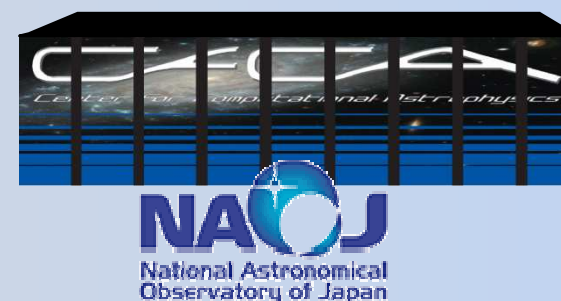


Accomplishments: SPR Reduction

- Goal: to reduce the Customer SPR Score by 40% (from 100% to 60%)
 - Goal achieved!
- Scoring
 - SPR scores are calculated from 3 factors. SPR age, SPR severity and OS factor.
 - Severity - SPR severity is 50 for Critical, 20 for Urgent, 5 for Major, 1 for Minor, Design, etc.
 - Age - SPR age is calculated from SPR days_in_assign field - converted to weeks.
 - OS Factor - OS factor is 1.0 for current OS generation (for example UNICOS/lc), 0.1 for previous generation (UNICOS/mp, MTA) and 0.01 for UNICOS, UNICOS/mk, etc.
 - Internal SPRs for BWOS/X2OS and EMTX (XMT) were added and weighted 1.0.

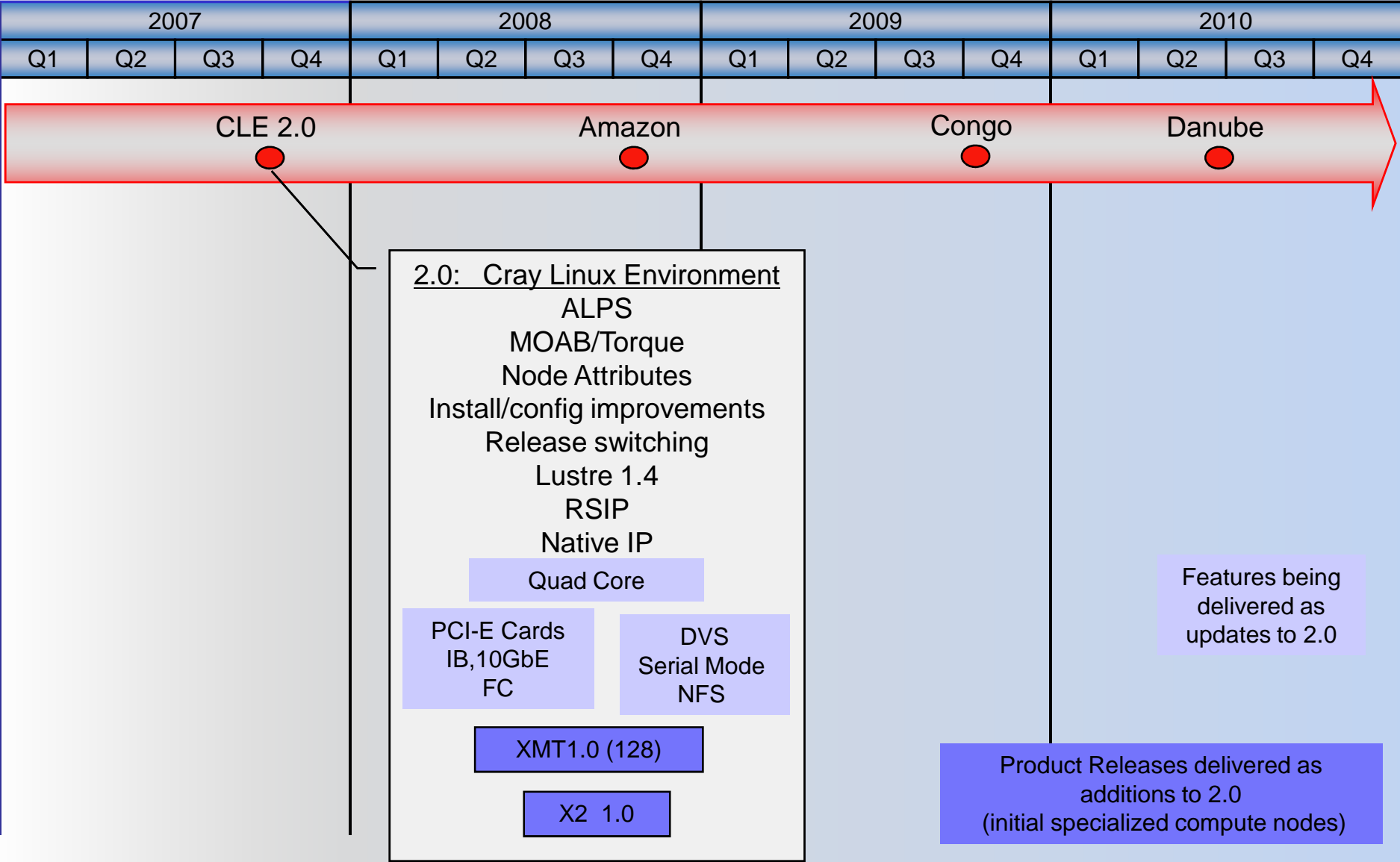
Accomplishment: New XT Customers

- CASA
- Danish Meteorological Institute
- HECToR
- National Astronomical
Observatory of Japan
- University of Bergen
- Yokohama City University

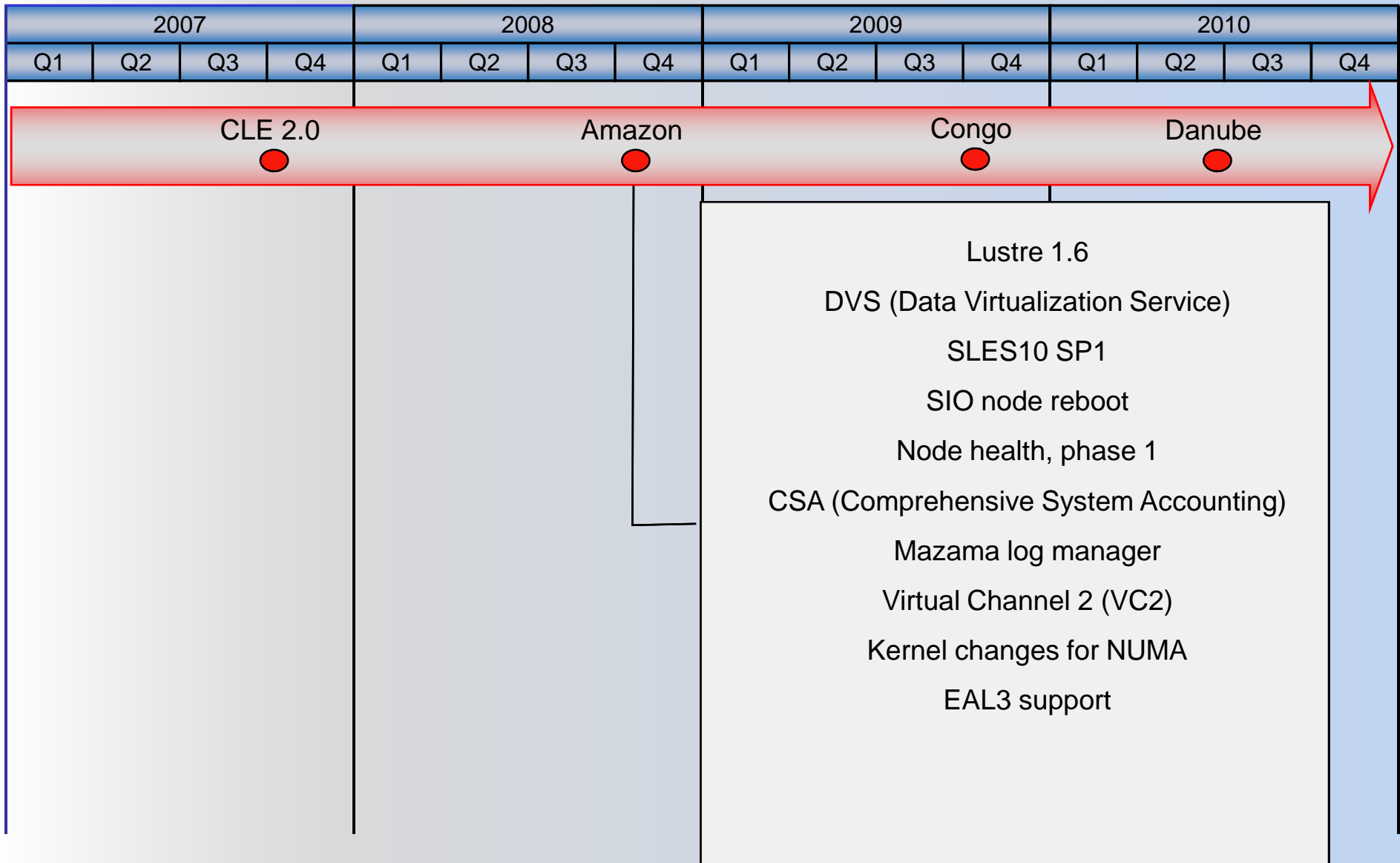


SOFTWARE FUTURES

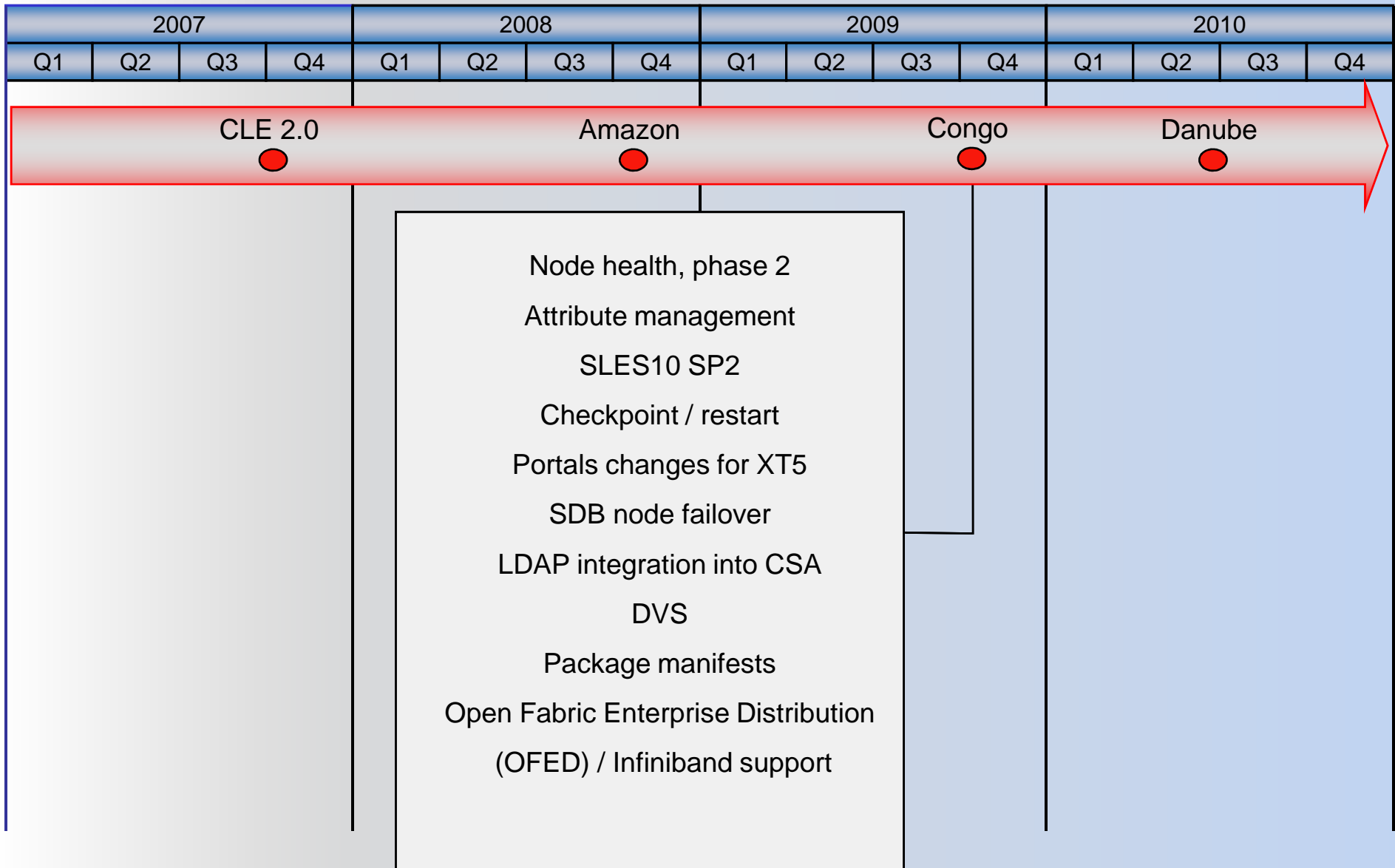
Cray Linux Environment (CLE) 2.0



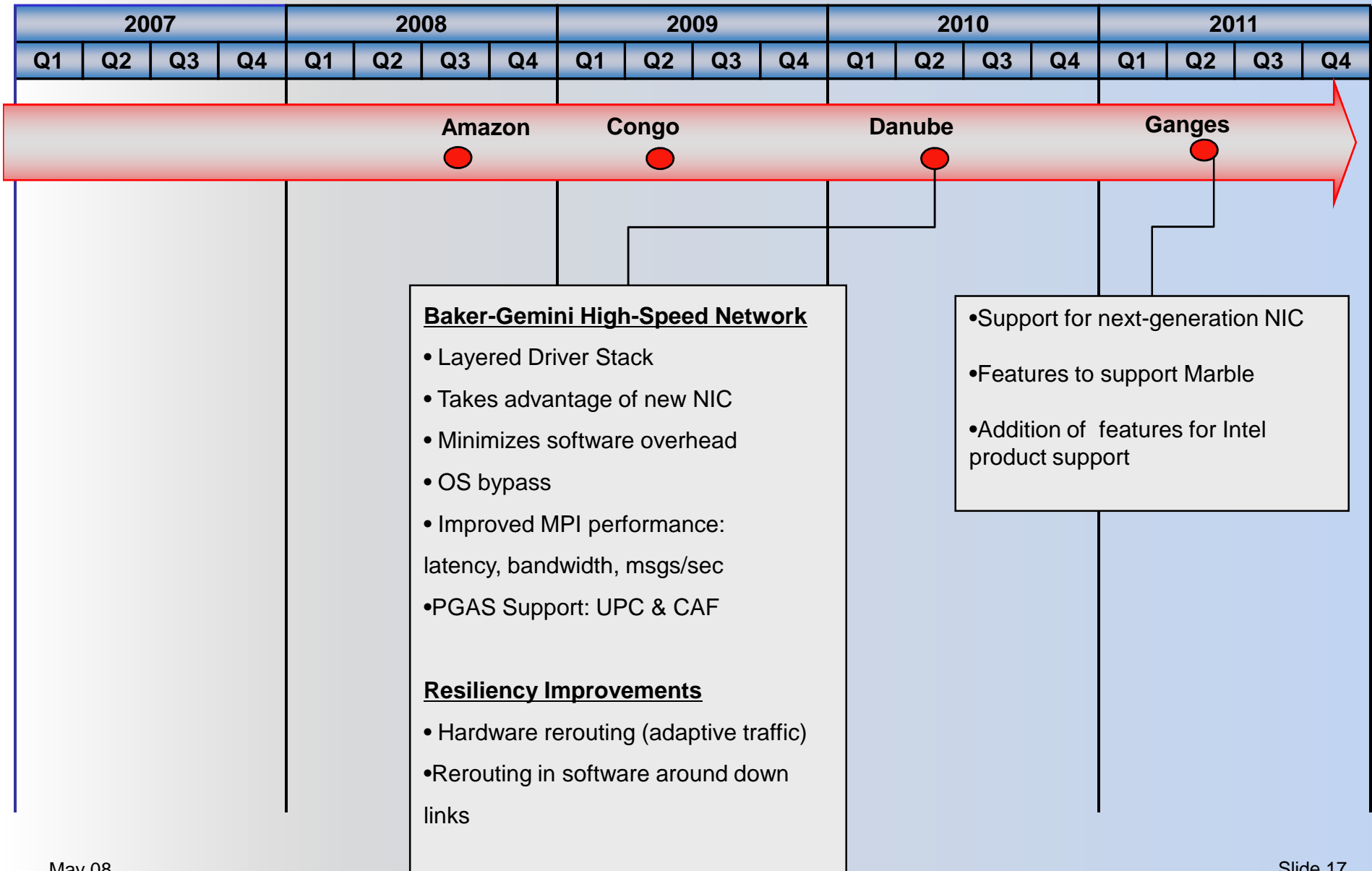
CLE Roadmap: Amazon



CLE Roadmap: Congo

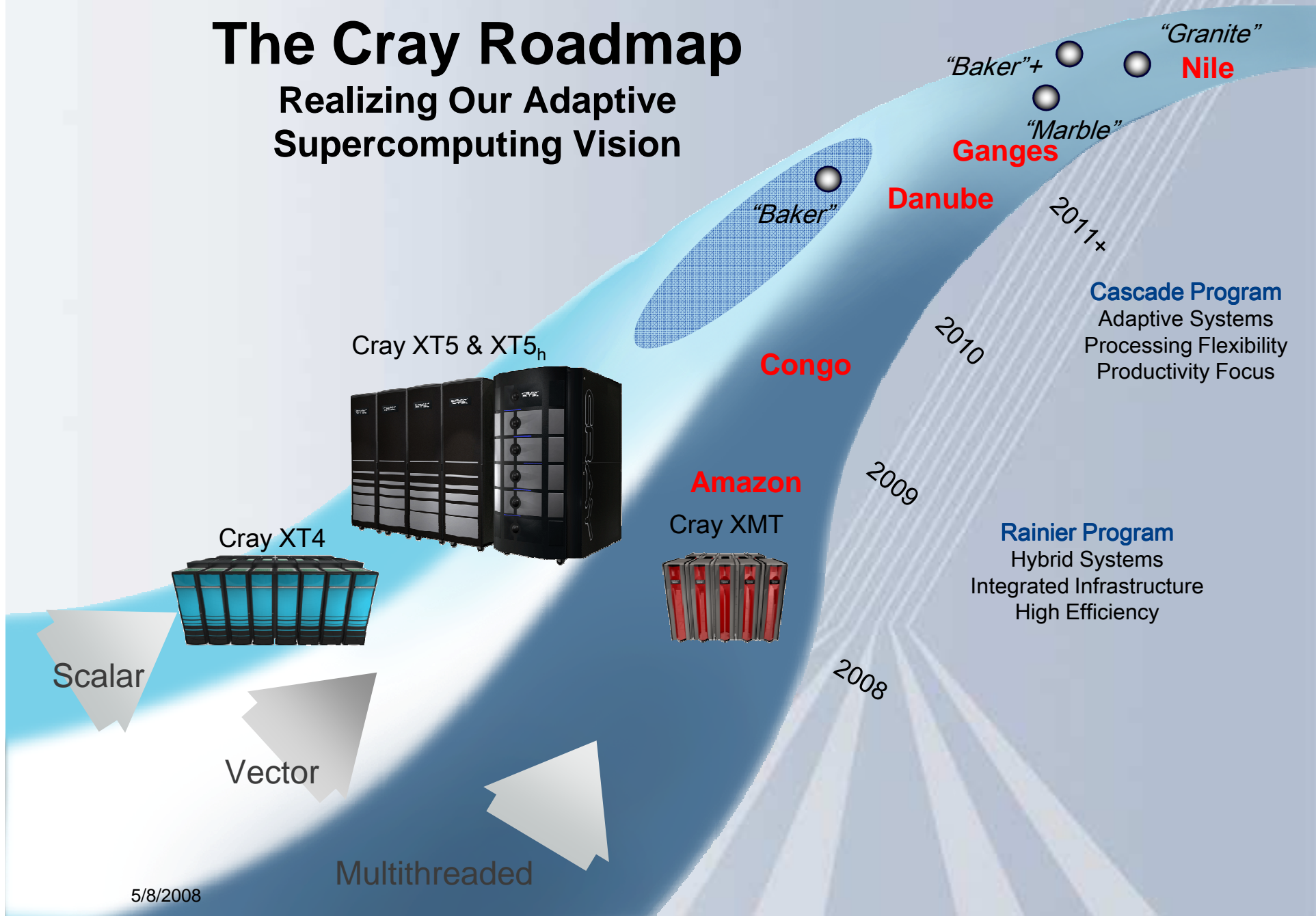


CLE Roadmap: Danube & Ganges



The Cray Roadmap

Realizing Our Adaptive Supercomputing Vision



CRAY XT5



Thank You

PetaScales