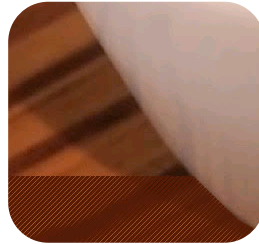
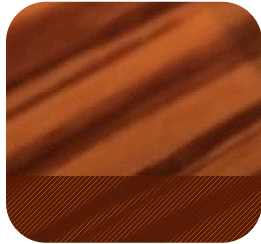
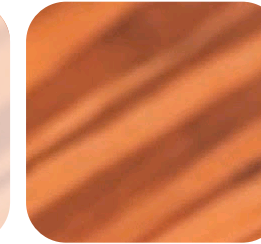
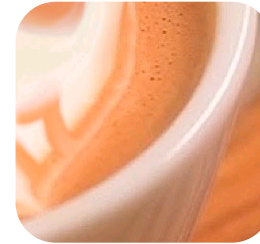
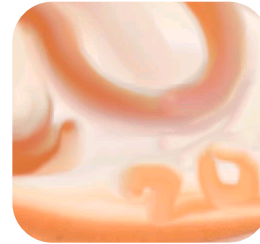
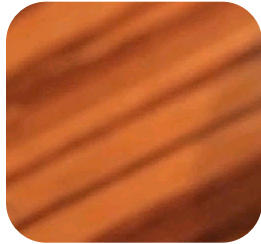
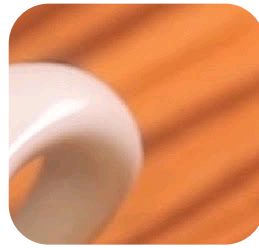
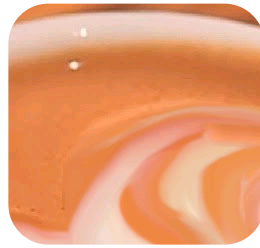


CRAY



**XC System Management Usability BOF
Joel Landsteiner & Harold Longley,
Cray Inc.**

CUG 2017. CAFFEINATED COMPUTING

Redmond, Washington May 7-11, 2017

BOF Survey

- <https://www.surveymonkey.com/r/KMG657S>
- **Aggregate Ideas at scale!**
- **Take a moment to fill out quick feedback form regarding BOF topics**
- **Anonymous, unless you choose to leave your email address**



Goal of System Management BOF

- **Facilitate direct conversation between customers and feature developers**
- **Draw upon experiences with CLE 6**
- **Identify areas of improvement within the product or industry standards or software which would be valuable**
- **Figure out which aspects of software people use the most, and want enhanced first**
- **Boot Performance Ideas**

General Comparison, CLE 5 vs. 6

- What is better in 5.2 compared to 6.0?
- What is better in 6.0 compared to 5.2?



Installer

- **Snaputil vs Snapper?**
 - How is snapshotting being used?
- **Are you using Live Updates?**
 - What kinds of software are we installing post-boot?
- **Are you using containers anywhere on CLE?**
- **How valuable would capturing live node images be?**
- **During upgrades, is there more or less downtime than CLE 5?**

IMPS (Images, repos, package collections, recipes)

- How often are you making custom recipes?
- Would you prefer to use another image building tool?
 - DIB?
 - Kiwi?
- How useful is the image root format?
- What has been your experience with Openstack/Glance?
 - UUIDs for images
 - Images are immutable
- **IMPS is built upon an API, but is relatively undocumented. Would this be valuable to system administrators?**

Configuration Management Framework (CMF)

- **Too much or too little?**
- **How valuable is cfgset validation?**
- **How useful has nodegroups been?**
- **How are you backing up cfgsets, if at all?**
- **Is anyone using anything other than ansible?**
- **Is there a more preferable method to do configuration?**
- **What kinds of ansible plays are you finding yourself needing to write as site-local playbooks?**

NIMS

- Is the ability to rollback changes useful?
- Have we noticed any performance slow downs?
- Are there any features that are in high demand?
- NIMS is built upon an API but is relatively undocumented. Would documentation encourage novel use?



Patch Process

- How can we make the patching process better?
- How many would make use of online patch repositories, if made available?
- Are required manual changes to the system clear?
- Do you have any content that is not distributed as RPM?

Legal Disclaimer

Information in this document is provided in connection with Cray Inc. products. No license, express or implied, to any intellectual property rights is granted by this document.

Cray Inc. may make changes to specifications and product descriptions at any time, without notice.

All products, dates and figures specified are preliminary based on current expectations, and are subject to change without notice.

Cray hardware and software products may contain design defects or errors known as errata, which may cause the product to deviate from published specifications. Current characterized errata are available on request.

Cray uses codenames internally to identify products that are in development and not yet publically announced for release. Customers and other third parties are not authorized by Cray Inc. to use codenames in advertising, promotion or marketing and any use of Cray Inc. internal codenames is at the sole risk of the user.

Performance tests and ratings are measured using specific systems and/or components and reflect the approximate performance of Cray Inc. products as measured by those tests. Any difference in system hardware or software design or configuration may affect actual performance.

The following are trademarks of Cray Inc. and are registered in the United States and other countries: CRAY and design, SONEXION, and URIKA. The following are trademarks of Cray Inc.: APPRENTICE2, CHAPEL, CLUSTER CONNECT, CRAYPAT, CRAYPORT, ECOPHLEX, LIBSCI, NODEKARE, REVEAL, THREADSTORM. The following system family marks, and associated model number marks, are trademarks of Cray Inc.: CS, CX, XC, XE, XK, XMT, and XT. The registered trademark LINUX is used pursuant to a sublicense from LMI, the exclusive licensee of Linus Torvalds, owner of the mark on a worldwide basis. Other trademarks used in this document are the property of their respective owners.