



# CUG 2017

**Business Meeting**

# Elections

- Statement from election committee chair
  - Abhinav Thota from Indiana University
- Candidate statements



# Board



- David Hancock, President (IU) – 1 year remaining
- Helen He (NERSC)
- *Tina Declerck, Secretary (NERSC) – reappointed*
- *Michael, Scott (IU) – Treasurer – appointed*
- Nick Cardo, DaL/Past-President (CSCS) – 1 year remaining
- Director-at-large (2) – TBD by election
- Director-at-large (1) – vacated by Scott – 1 year term, appointed

Flickr user MariChela09: The Jump



- Volunteer for Program Committee / Advisory Council
  - Roles that don't require a board commitment
- Help with one of our SIGs
- Join the Board or help by nominating friends (or enemies)



# Non-profit Status Update

- Application withdrawn in December 2016
- IRS provided notice of planned rejection
- Why?
  - Past rejections (from early/mid-2000's)
  - Lack of competitive participation
- Options going forward, looking for input



Flickr user indigotimbre: dental chair



Flickr user Simon Cunningham: IRS



**Host**



**Cray**



Flickr users Jeroen Rouwkema

**User**



tagseurope

**Group**



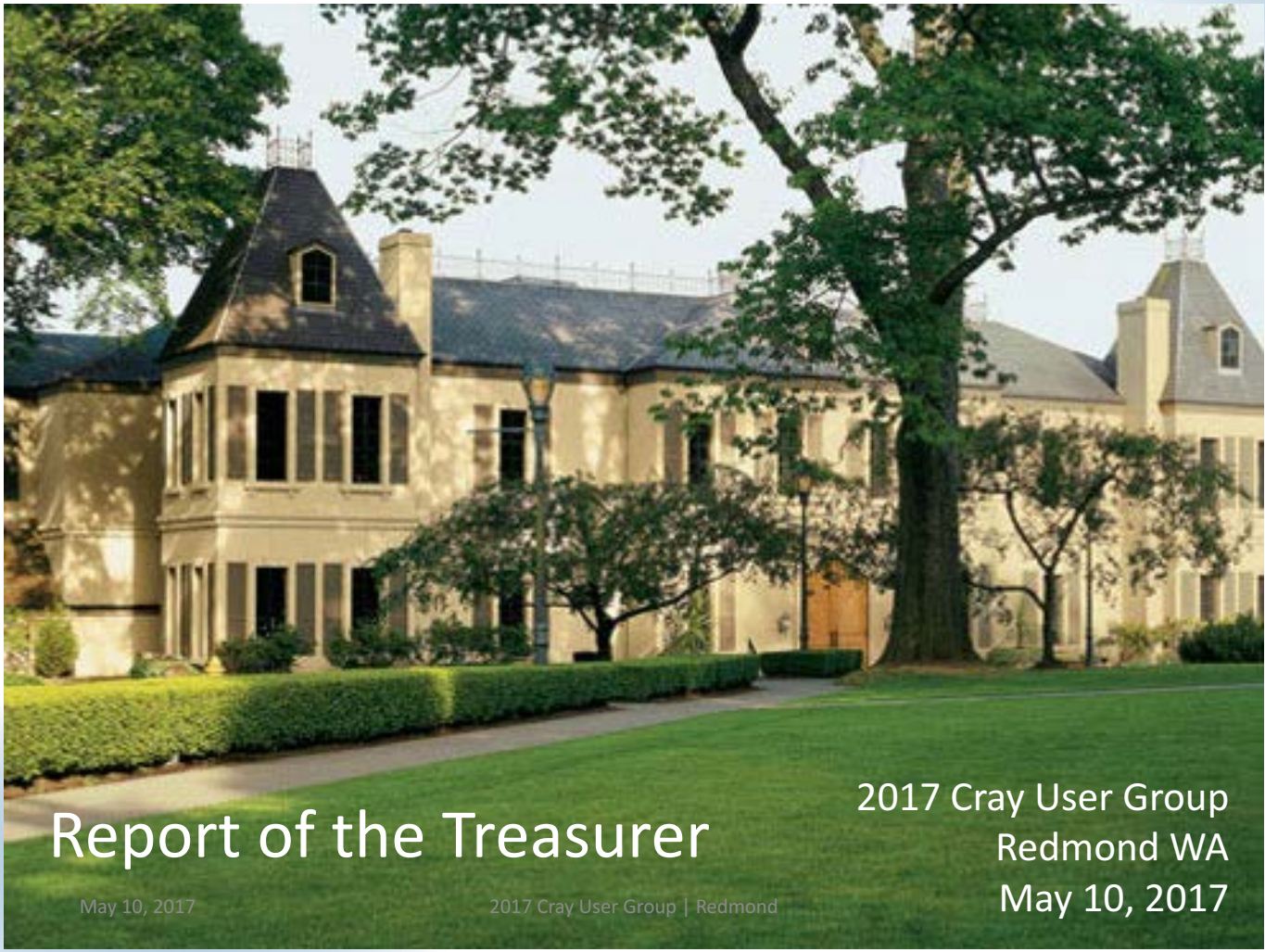
Julian Balogh

# Updates from VP/Program Chair



- **Data Analytics Theme (NEW)**
  - New Data Analytics Track
  - Invited talks, tutorials, BoFs, Panel with DA focus
- **Journal publication (NEW)**
  - Peer reviewed (4 reviewers each paper)
  - Selection based on normalized average review scores, and balance from all 5 tracks
- **Acceptance rate**
  - 75% for CUG conference
  - 67% with sponsor talks factored in. (2016: 91%, 2015: 69%)
  - 14% for CCPE Journal
- **Considerations for next year**
  - Attract more submissions (with everyone's help!)
  - Continue with the journal publication
  - Posters considered, will wait until acceptance rate being lower
- **Fill out the survey!**





# Report of the Treasurer

May 10, 2017

2017 Cray User Group | Redmond

2017 Cray User Group  
Redmond WA  
May 10, 2017

# CY16 Corporate Financial Position



## *Cash Position as of 31 December, 2015*

- Account Balances
  - BB&T           \$ 93,846 USD
  - PayPal
    - U.S. Dollar     \$ 46,856 USD
    - Pound Sterling £ 23,991 GBP  
x1.4737     \$ 35,355.54USD
    - Euro           €     0 EUR
    - Swiss Franc    ₣ 79,798 CHF  
x1.0015     \$ 79,918 USD
  - Total:           \$ 255,975 USD

## *Cash Position as of 31 December, 2016*

- Account Balances
  - BB&T           \$ 138,240.69 USD
  - PayPal
    - U.S. Dollar     \$ 52,684.42 USD
    - Pound Sterling £ 23,990.84 GBP  
x1.2345     \$ 29,616.69 USD
    - Euro           €     0 EUR
    - Swedish Krona kr 214,271.67 kr  
X0.112562   \$    24,118.85
    - Swiss Franc    ₣ 79,798 CHF  
x1.0182     \$ 81,250,32 USD
  - Total:           \$ 325,911 USD

Financial data is associated with the Corporate Fiscal Year activity, not any specific event.

Cray User Group, Incorporated  
**Profit and Loss Standard**

05/10/17

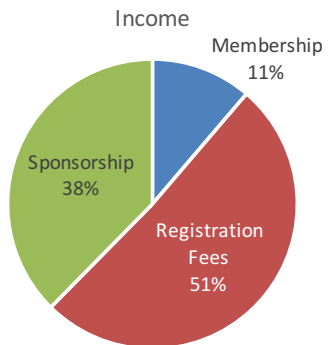
January through December 2016

Jan - Dec '16

# 2016 Income/Expense



Ordinary Income/Expense		Expense	
Income		Corporation Expense	10,276.80
CUG Conf. Income		Bank Fees	9,014.78
Guest Registration	2,805.00	CUG Conf. Expense	
Registration Fees	133,405.00	BOD Expenses	8,373.24
Sponsorship	106,750.00	Calls & Announcements	2,472.47
Total CUG Conf. Income	242,960.00	Conference Evaluation	2,968.38
Membership	31,950.00	Contractor Travel	1,078.33
XTreme SIG Income		CUG Night Out	54,774.13
Registration Fees	8,900.00	LAC	14,910.36
Total XTreme SIG Income	8,900.00	Office Expenses	386.27
Total Income	283,810.00	Preconf Eval/Select/Negotiate	3,963.39
		Printing	3,314.50
		Program	5,522.64
		Service/Transaction Fees	1,877.28
		Shipping	23.29
		Special Event	6,989.90
		Venue	75,955.52
		Total CUG Conf. Expense	182,609.10
		Web Services	648.25
		XTreme SIG Expense	2,312.11
		Total Expense	204,861.04
		Net Ordinary Income	78,948.96





# Conference Attendance 2011-2017



	Fairbanks	Stuttgart	Napa	Lugano	Chicago	London	Redmond
<b>Registration :</b>	'11	'12	'13	'14	'15	'16	'17
• Early	74	68	84	95	61	85	88
• Regular	22	20	41	94	118	106	20
• Late	07	07	21	21	29	48	16
• Non-Member							05
• Guest (CNO)	23	13	28	31	09	22	08
Extreme SIG	NA	36	46	48	48	52	46
BoD/LAC			10	11	11	11	07
Invited Speaker					02	02	04
Additional Sponsor			13	10	08	20	08
<b>Sponsorship :</b>							
• Cray Attendees	34	38	38	46	50	55	61
• Other Sponsors	18	31	22	18	15	17	21
<b>Total</b>	155/23	164/13	206/28	210/31	208/09	239/22	219/08





# 2017 Conference Participation







# Membership



- **New Members**

- **Forschungszentrum Juelich GmbH (Juelich)**
- **Shared Services Canada (SSC)**
- **Deloitte & touche (DT)**
- **United States Naval Academy (NAVY)**

- **Departing members**

- **University of Bergen**
- **SDSC**
- **Titech**
- **DoD**

# SIG Updates



# Xtreme SIG Activities

Chair Tina Butler

# 26 Xtreme Member Sites



- [AFRL - US Air Force Research Laboratory](#)
- [ARSC - Arctic Region Supercomputing Center](#)
- [CSC - IT Center for Science Ltd.](#)
- [DMI - Danish Meteorological Institute](#)
- [EXXON - ExxonMobil Technical Computing Co.](#)
- [ECMWF - European Centre for Medium-Range Forecasts](#)
- [GCHQ - Government Communications Headquarters](#)
- [GEGR - GE Global Research Center](#)
- [HPCX - HPCX Consortium \(HECToR\)](#)
- [INDIANA U - Indiana University](#)
- [IVEC - Pawsey Centre](#)
- [KAUST - King Abdullah University for Science and Technology](#)
- [LANL - Los Alamos National Laboratory](#)
- [NCRC - National Climate-Computing Research Center](#)
- [NCSA - National Center for Supercomputing Applications](#)
- [NERSC - National Energy Research Scientific Computing Center](#)
- [NICS - National Institute for Computational Sciences](#)
- [ORNL - Oak Ridge National Laboratory](#)
- [PDC-HPC - Center for High Performance Computing at KTH](#)
- [PGS - Petroleum Geo-Services](#)
- [SNL - Sandia National Laboratories](#)
- [CSCS - Swiss National Supercomputing Centre](#)
- [UBERGEN - University of Bergen](#)
- [HLRS - University of Stuttgart](#)
- [ERDC - US ARMY Corps of Engineers](#)
- [ZIB - Zuse Institute Berlin](#)

# Xtreme Meetings



- **2 Face-to-face meetings since last CUG**
  - All day meeting on the Sunday before SC16
  - All day meeting on May 87<sup>th</sup> at CUG 2017
- **Monthly conference calls on the last Wednesday of the month.**
- **Next face-to-face at SC17 in Denver.**

# Xtreme CUG 2017



- **14 sites attended**
  - NERSC, NCRC, ORNL, CSCS, DOD, PAWSEY, NCSA, LANL, CSC, KAUST, ECMWF, GCHQ, INDIANAU, SANDIA
- **45 attendees**
- **Upcoming Cray releases**
- **CLE 6 experiences**
- **Containers**



# Xtreme SIG Election



- **New SIG chair needed**
- **Election by site representatives ongoing**



# System Support SIG Report



- **Attendance**

- 34 Attendees from 14 Sites

- **Elections**

- Nicholas Cardo (CSCS) is now the SIG Chair

- **Special Presentations/Discussions**

- John Howarth (CRAY) presented on Lustre and Storage.
- Jay Blakeborough (CRAY) held an open discussion on support including the use of SSA.

- **Future**

- Discussed ideas on how to make the SIG more useful: burning issues, calls throughout the year, email lists, website, site updates including accomplishments, ...
- Work with XTreme SIG to identify appropriate topics for each SIG.

# Programming, Environment, Applications & Documentation (PEAD) SIG



- **PEAD-SIG Feedback**

- Need to refresh mailing list, contact new CUG member site.
- Need to create a wiki page
- Agreed on webinar quarterly.
  - Next one in July with updates from Luiz DeRose ( need to get details to setup confcall and recording)

- **CSCS Site update by Jean-Guillaume Piccinali**

- Overview on Easybuild, XALT usage and Reframe (a new regression framework)

- **Programming Environment preview update by Luiz DeRose**

- New releases of cdt17.05 with the new support of Python and R, Shared new feature of module snapshot.
- Community looking for support from Cray on Python, Boost, OpenMPI and OpenACC.

- **General Discussion:**

- Cray need to provide detailed information about builds ( exact versions of libraries, compilers)
- Documentation is not exhaustive and not maintained.
  - docs.cray.com will be decommissioned in December 30, 2017. Not maintained since November 2015. New portal: pubs.cray.com.



# CUG Voting Results

- Two Director-At-Large members are...

# Closing Session



# Trivia Time!



# Outgoing Board



- Richard Barrett (Director-At-Large)
- Jim Rogers (Treasurer)



Flickr user Josh Michtom: Thanks

# Board



- David Hancock, President (IU) – 1 year remaining
- Helen He (NERSC)
- *Tina Declerck, Secretary (NERSC) – reappointed*
- *Michael, Scott (IU) – Treasurer – appointed*
- Nick Cardo, DaL/Past-President (CSCS) – 1 year remaining
- *Director-at-large (2) –*
- *Trey Breckenridge (MSU) & Janet McCord (TACC)*
- *Director-at-large (1) – Evil Jim Williams (LANL) – 1 year term, appointed*

# XTreme Election



- 13 sites voted, final result within 1 vote
- Up to new chair to hold election for deputy
- Welcome Mark Klein (CSCS) as new chair
- Thanks to Tina Butler for many years of service!



# Thanks!



- Program Committee, SIG Chairs, and Board
- Hotel and Event Staff
  - Adiba, Joe, Julie, & Kirk
  - Michelle, Hannah, & Sydney
- Local Arrangements
  - Christy
  - Peg
  - Emma

# See you next year!



**VISIONARY** COMPUTING

20 – 24 May, 2018



**CUG 2018** STOCKHOLM